



**FR/BL**

Tipologia: - Magnesite



**FR/BR**

Tipologia: - Magnesite  
- Sintex  
- Resina  
- Pulitori  
- 5Lux



**FR/P**

Tipologia: - Magnesite  
- Resina  
- Sintex  
- Pulitori  
- 5Lux



**FR/B**

Tipologia: - Resina  
- Sintex  
- Pulitori  
- 5Lux



**FR/X**

Tipologia: - Resina  
- Magnesite



**BR/X**

Tipologia: - Resina  
- Magnesite

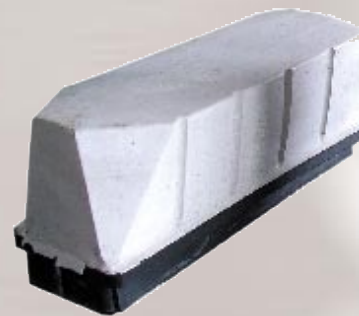


**BR/140**

Tipologia: - Magnesite  
- Sintex  
- Resina  
- Pulitori

**PR/170**

Tipologia: - Magnesite





**LEV/P**

Tipologia: - Magnesite  
- Resina

Diametri: - 100 mm  
Ø - 130 mm  
- 150 mm

**LEV/E**

Tipologia: - Magnesite  
- Resina

Diametri: - 100 mm  
Ø - 130 mm  
- 150 mm



**LEV/S**

Tipologia: - Magnesite  
- Resina

Diametri: - 100 mm  
Ø - 130 mm  
- 150 mm

**LEV/XT**

Tipologia: - Magnesite  
- Resina  
- Sintex

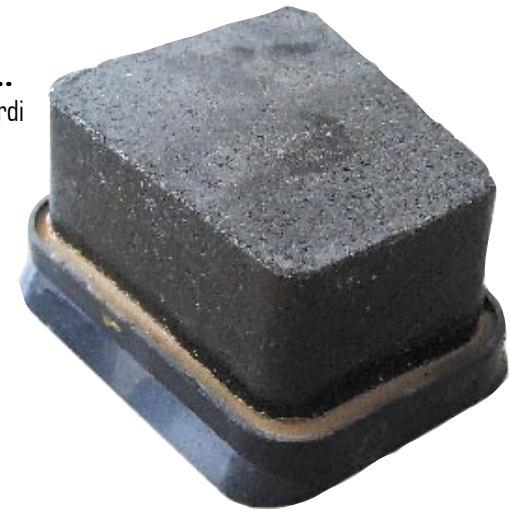
Diametri: - 100 mm  
Ø - 130 mm  
- 150 mm





**FR/VX5**

Tipologia: - 5extra per marmi verdi



**FR/LX5**

Tipologia: - 5extra  
- Pulitori

\*disponibile anche con basetta in plastica

**BR/LX5**

Tipologia: - 5extra



**LEV/LX5**

Tipologia: - 5extra

Diametri: - 100 mm  
Ø - 130 mm  
- 150 mm





**BR/ANT**

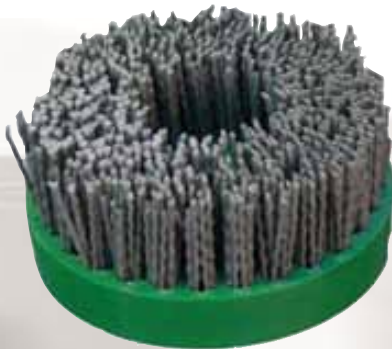
Tipologia: - Anticanti

Lunghezza: - 130 mm  
- 140 mm  
- 170 mm



**FR/ANT**

Tipologia: - Anticanti



**PL/ANT**

Tipologia: - Anticanti



Diametri: - 100 mm  
Ø - 130 mm



**PL/250ANT**

Tipologia: - Anticanti



**PINZA S-01**

Portata: 300 kg

70 mm



**PINZA S-02**

Portata: 1000 kg

100 mm



**PINZA S-03**

Portata: 300 kg

70 mm

**PINZA S-04**

Portata: 400 kg



100 mm



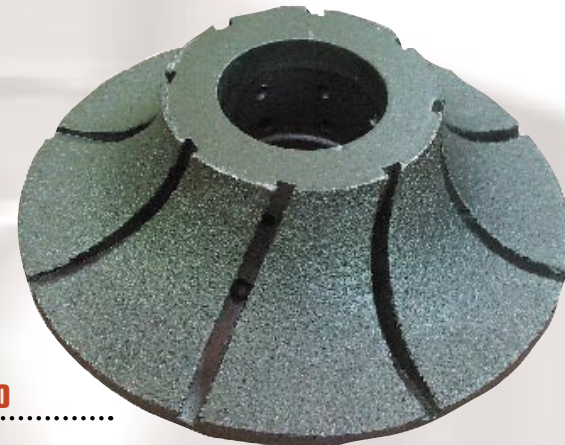
**MOLE PROFILATE  
E PIANE PER GRANITO**



**MOLE PROFILATE  
E PIANE PER MARMO**

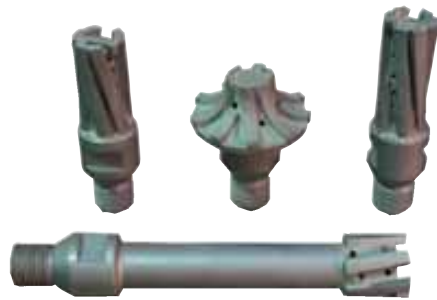


**MOLE CNC GRANITO**



**MOLE CNC MARMO**

**MOLE ATTACCO  
1/2 GAS PER GRANITO**



**MOLE ATTACCO  
1/2 GAS PER MARMO**



**FRESE ATTACCO 1/2 GAS  
AL WIDIA PER SCOLPITRICI  
E INCISOGRAFI**

**DISCHI DA FRESA  
PER MARMO E GRANITO**





**FORETTI PER MARMO  
E GRANITO**



**DISCHI BOMBATI  
MARMO E GRANITO**

Diametri: - 115 mm  
 Ø - 125 mm  
 - 150 mm  
 - 180 mm



**DISCHI SPECIALI PER GRANITO**

Diametri: - 125 mm  
 Ø - 230 mm



**DISCHI SPECIALI PER MARMO**

Diametri: - 125 mm  
 Ø - 230 mm





**DISCHI VELOX**

- Diametri: - 115 mm  
 ∅ - 125 mm  
 - 150 mm  
 - 180 mm  
 - 230 mm



**DISCHI TURBO**

- Diametri: - 115 mm  
 ∅ - 125 mm  
 - 150 mm  
 - 180 mm  
 - 230 mm

**DISCHI SPEEDY**

- Diametri: - 115 mm  
 ∅ - 125 mm  
 - 150 mm  
 - 180 mm  
 - 230 mm



**MOLE CON TASTATORE ROTANTE**



**FRANKFURT SPIANATORI**

N° Denti: - 6  
- 7  
- 8  
- 9



**PIATTI SPIANATORI**

Diametri: - 150 mm  
- 200 mm  
- 250 mm  
- 300 mm



**VIRGOLE SPIANATRICI**

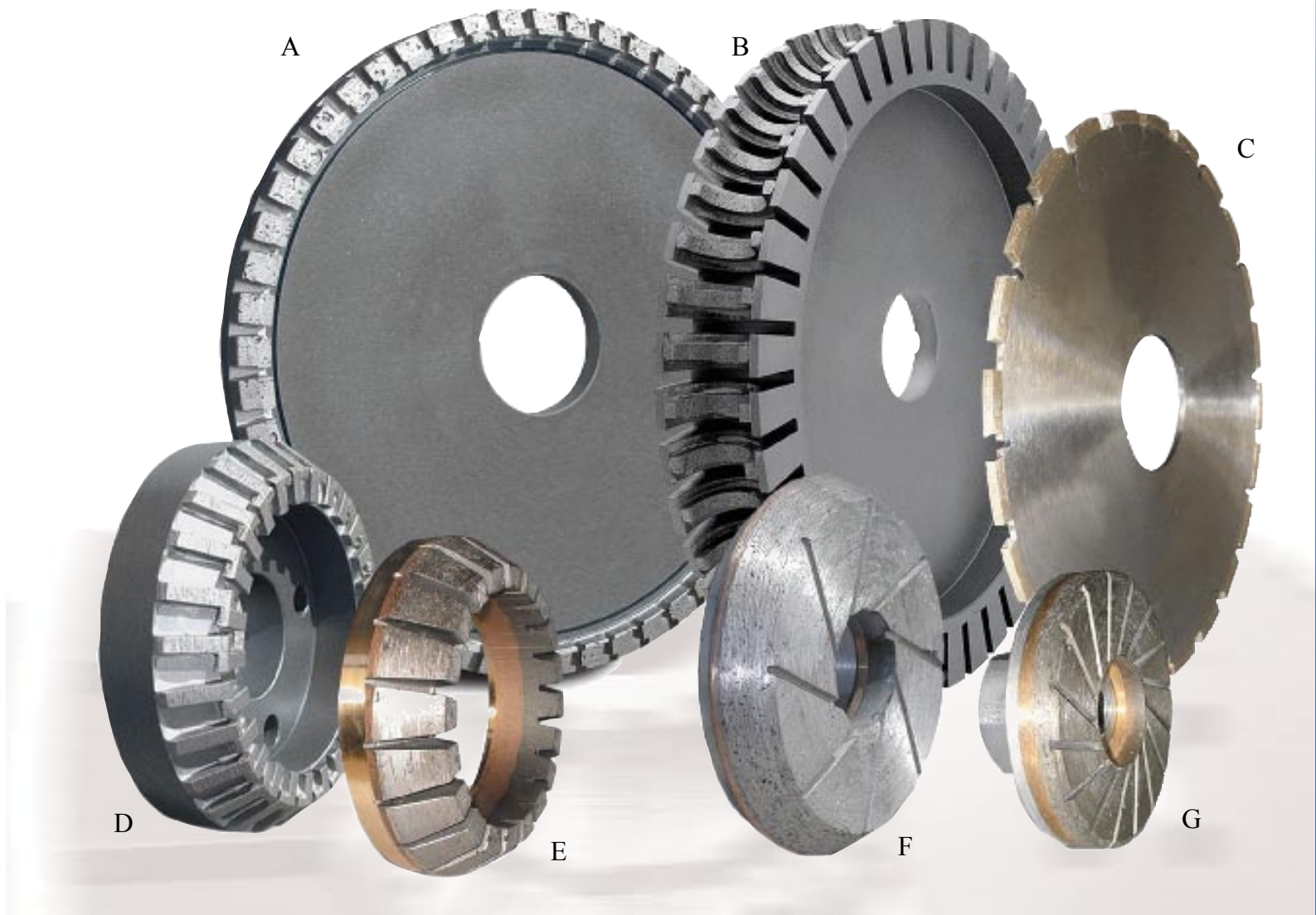
N° Denti: - 5  
- 6  
- 7



**FICKERT**

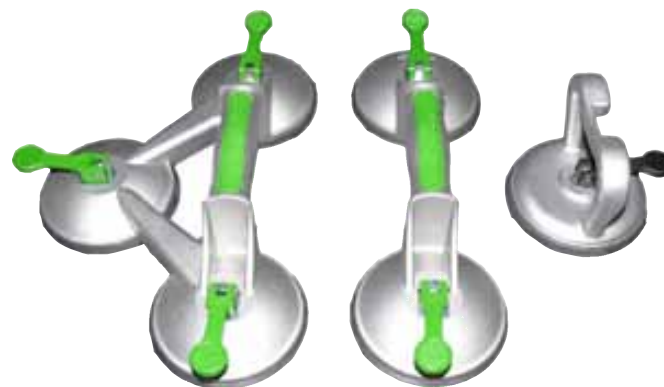


**UTENSILI PER LUCIDACOSTE  
A NASTRO O MONOTESTA**





**FUNI IN ACCIAIO  
E FASCE IN NYLON**



**VENTOSE MANUALI**

Portata: 1 piastra 40 kg  
2 piastre 80 kg  
3 piastre 120 kg

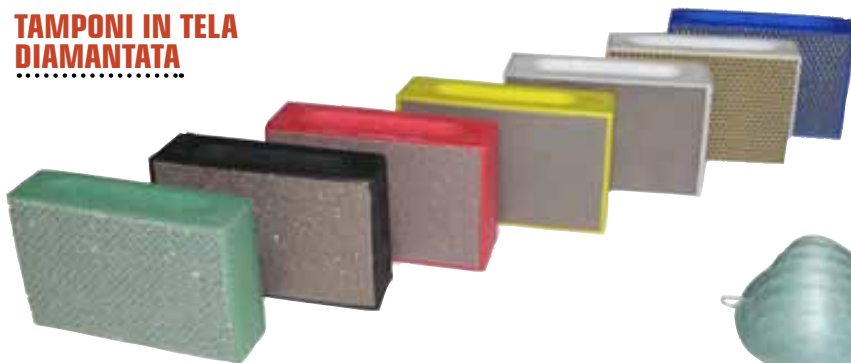


**SPATOLE**



**CUFFIE**

**TAMPONI IN TELA  
DIAMANTATA**



**MASCHERINE  
ANTIPOLVERE**



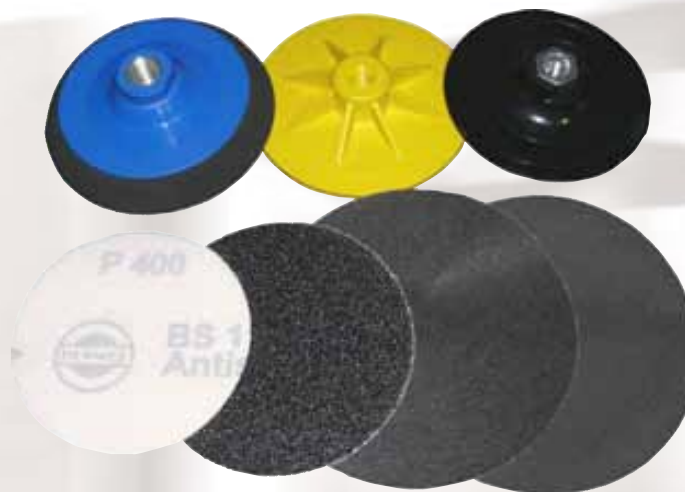
**DISCHI FIBRATI**

Diametri: - 120 mm  
Ø - 140 mm  
- 180 mm



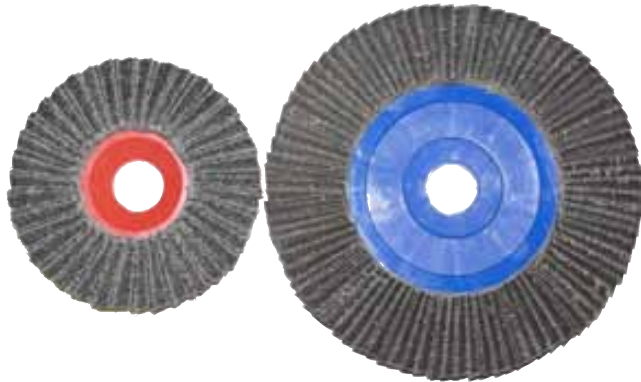
**DISCHI FIBRATI  
CON VELCRO**

Diametri: - 115 mm  
Ø - 125 mm  
- 150 mm  
- 180 mm



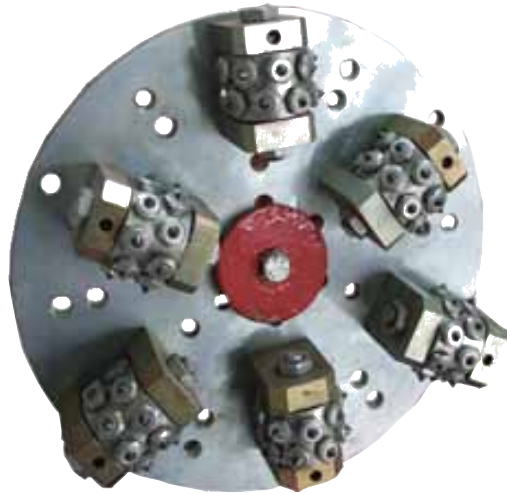
**DISCHI RADIALI**

Diametri: - 110 mm  
 Ø - 165 mm

**FOGLI E TELE ABRASIVE****MOLE LAMELLARI**

Diametri: - 165 mm  
 Ø

**MOLE LAMELLARI GAMBO**



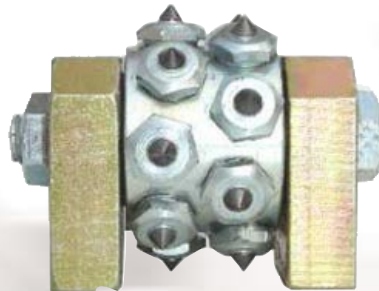
**PIATTO BOCCIARDATORE**

Diametri: - 300 mm  
- 350 mm  
- 400 mm  
- 500 mm

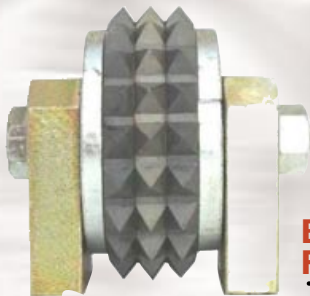
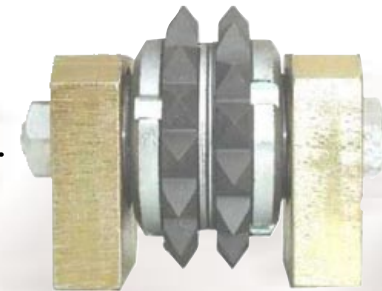


**SMERIGLIATRICE  
ROTOBOCCIARDATRICE**

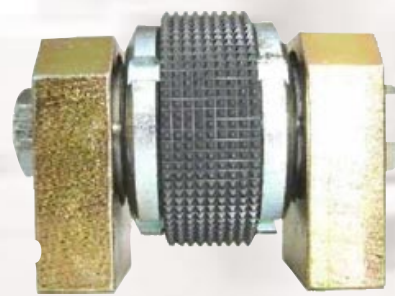
**BOCCIARDATURA  
GRANDE**



**BOCCIARDATURA  
MEDIA**



**BOCCIARDATURA  
FINE**



**SABBIATURA**